



Enterprise Reporting Solution

Argos 6.1.1 Release Guide

Product version 6.1.1

Last updated 12/18/2018

Trademark, Publishing Statement, and Copyright Notice

© 1998-2018 Evisions, Inc. All rights reserved.

This software and related documentation are provided under a license agreement containing restrictions on use and disclosure and are protected by intellectual property laws. No part of this document may be reproduced, stored in or introduced into a retrieval system, or transmitted in any form or by any means (electronic, mechanical, photocopying, recording, or otherwise), or for any purpose, without the express written permission of Evisions, Inc.

The information contained herein is subject to change without notice and is not warranted to be error-free. Product features referenced herein for a period of time may not match product contents. Evisions, Inc. does not warrant that the functions contained in the software will meet your requirements or that the operation of the software will be uninterrupted or error free. Evisions, Inc. reserves the right to make changes and/or improvements in the software without notice at any time.

This software and documentation may provide access to or information on content, products, and services from third parties. Evisions, Inc. and its affiliates are not responsible for and expressly disclaim all warranties of any kind with respect to third-party content, products, and services. Evisions, Inc. and its affiliates will not be responsible for any loss, costs, or damages incurred due to your access to or use of third-party content, products, or services. Evisions, Inc. does not endorse the content or developer of any products or web sites mentioned.

All information in this guide is designed for instructional purposes only. Evisions, Inc. makes no guarantees regarding the accuracy or performance of any techniques used in this guide. Software configurations and environments may vary, and some techniques used in this guide may not operate efficiently under all configurations. This guide may contain examples of various technologies or products, which are the sole property and responsibility of their creators.

Trademarks are the property of the respective owners for any products mentioned herein.

Table of Contents

- What's New in Argos 6.1.1?** **4**
 - MAPS and Argos Updates 4
 - Product versions 4
 - Installation 4
 - 1. Prepare test environment and ensure current backup 4
 - 2. Check for updates 4
 - 3. Allow update process to complete 5
 - 4. Verify the latest version is installed 5
- MAPS Administrators** **6**
 - Clustered MAPS Installations for Argos 6
- Argos 6.1.1 Release Notes** **7**
- Getting Help** **9**

What's New in Argos 6.1.1?

Evisions is pleased to announce the release of Argos version 6.1.1, which includes the following changes:

- MAPS and Argos can now be installed in a clustered environment consisting of multiple MAPS server nodes behind a load balancer, providing increased performance, stability, and redundancy.
- Reverted a 6.1 enhancement for higher DPI monitors that was causing Argos to scale improperly when used with multiple monitors with different DPI or scaling settings.
- Additional resolved issues.

We appreciate the feedback received from all of our users. Our products would not be what they are today without your continued support. If you have any comments or suggestions, please do not hesitate to [open a HelpDesk ticket](#) and let us know.

MAPS and Argos Updates

Some of the changes in this release require an update to MAPS as well as to Argos. We recommend upgrading both products to the latest versions concurrently.

[Product versions](#)

The latest versions of MAPS and Argos included in this release are:

- Argos mapplet 6.1.1.0.1801 / Argos client 6.1.1.0.2182
- MAPS service 6.1.1.0.2018 / MAPS Config 6.1.1.0.1070

Installation

[1. Prepare test environment and ensure current backup](#)

We highly recommend installing updates in a test environment before applying them to your production environment. You should make sure that a current backup is available in case of any unforeseen issues. To create a full backup of your MAPS environment, go to the **Server** -> **Backups** screen in MAPS and click **Backup Now**.

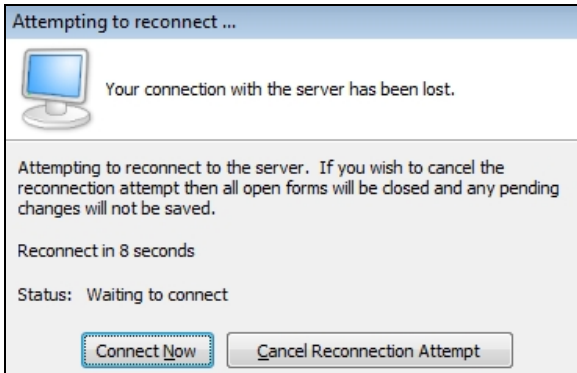
[2. Check for updates](#)

Click the **Check for Updates** button in the MAPS Configuration tool to view available updates.

It is possible to apply updates when users are on the system; however, to avoid the possibility of losing unsaved work we recommend applying updates during off hours.

[3. Allow update process to complete](#)

When applying updates to the MAPS service you will be temporarily disconnected from the server:



The update process may take a few minutes to complete. **Do NOT cancel the reconnection attempt or manually restart the server.** You will automatically be reconnected to the server once the update has been applied.

[4. Verify the latest version is installed](#)

To ensure that you are on the most current version, continue clicking the **Check for Updates** button and applying the updates until no new updates are available.

Please Provide Us with Your Feedback!

As always, we welcome any [feedback or suggestions](#) you may have. We very much appreciate your thoughts and suggestions, so please keep the great ideas coming!

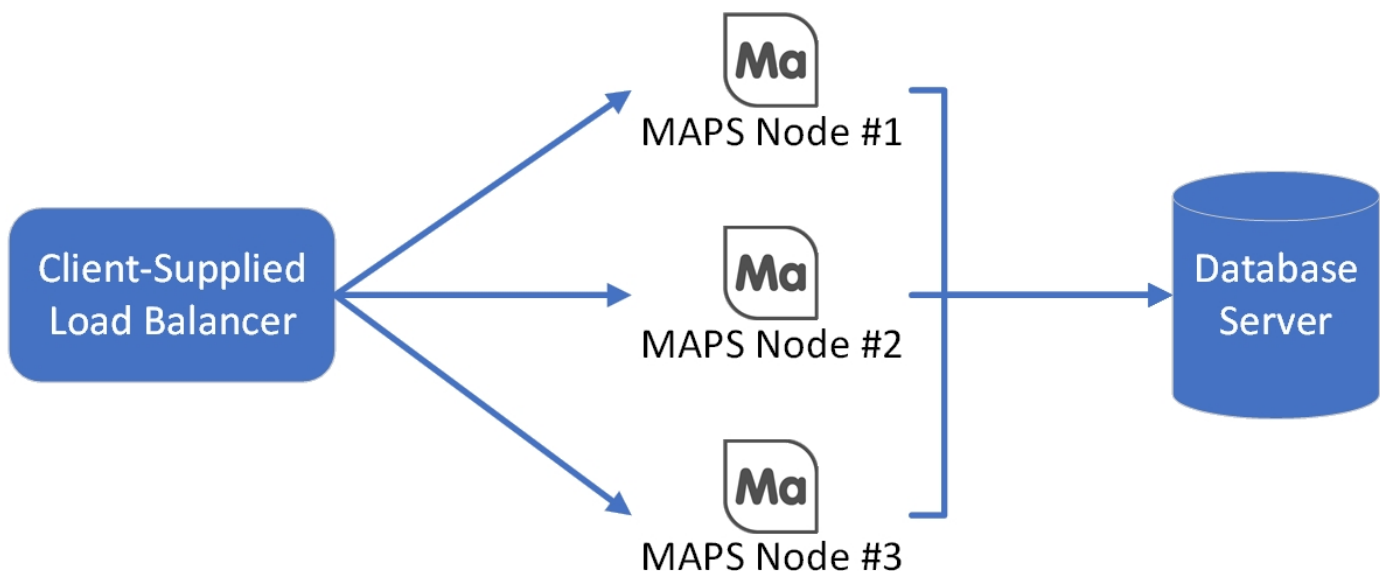
MAPS Administrators

Clustered MAPS Installations for Argos

MAPS 6.1.1 introduces a new optional clustering feature designed to better support running Argos in high-demand environments. A clustered MAPS installation consists of multiple redundant MAPS server nodes working together to handle a large user load, all connected to the same MAPS and Argos databases. This provides several benefits:

- Ability to support larger numbers of users.
- Increased performance, particularly in high-usage environments.
- Redundancy in case of server failure.
- Ability to take individual servers offline for maintenance without impacting users.

A clustered configuration uses several servers, including a database server and three or more MAPS server nodes. These servers can be either physical servers or virtual machines, so long as they have sufficient resources. Each MAPS server node connects to a PostgreSQL database server containing the MAPS and Argos databases, ensuring that all users have access to the same data in real time. A load balancer or load balancing software is used to distribute incoming traffic among the available MAPS server nodes.



Existing MAPS and Argos environments can easily be moved to a new clustered environment, preserving your data, user configuration, and other MAPS and Argos settings through a simple migration process.

Note: Argos is the first MAPS application to support running in a clustered environment, due to the relatively high number of Argos users. If your institution also uses FormFusion and/or IntelCheck, you would simply keep your existing standalone installation for use with these products in addition to the new clustered environment for Argos.

If you would like more information on the optional clustering feature, please [contact your Evisions account representative](#).

Argos 6.1.1 Release Notes

Argos Mapplet 6.1.1.1801 / Argos Client 6.1.1.2180
MAPS Service 6.1.1.1985 / MAPS Config 6.1.1.1064

Argos

Resolved Issues

Area	Description	Issue number
OLAP	Attempting to run an OLAP cube containing a calculated measure that referenced a missing (deleted) measure resulted in an access violation in the Web Viewer.	AR-5108
Scheduling	When editing a schedule, the maximum timeout was displaying as 0 regardless of the actual timeout length if the Use Default box was checked.	AR-5788
User interface	The icons shown in the Back/Forward dropdowns at the top of the Explorer tree were missing for schedules and did not distinguish between different report types.	AR-5465
User interface	Reverted a 6.1 enhancement for higher DPI monitors that was causing Argos to scale improperly when used with multiple monitors with different DPI or scaling settings.	AR-5791
Web Viewer	The Web View button in the DataBlock Design window did not open the correct URL for a new DataBlock until the DataBlock was closed and reopened.	AR-5655

Enhancements

Area	Description	Issue number
Data connections	The User/Group Rules screen of the data connection dialog now supports referencing the current user as a variable when specifying a username and password. This option may be used to configure access via a proxy account in Banner 9 environments. For example, entering "banproxy [\$(\$User.Name)]" in the username field would authenticate to the database using the banproxy account with the current user as the proxy user.	MAPS-1589
Performance	MAPS can now be installed in a clustered environment consisting of multiple MAPS server nodes behind a load balancer, providing increased performance, stability, and redundancy at institutions with large numbers of users.	MAPS-1550
Server	The nightly MAPS backup now includes optimizations for the MAPS and Argos SQLite databases, potentially reducing file sizes and improving performance.	MAPS-1976

Resolved Issues

Area	Description	Issue number
Accessibility	Screen readers were reading the buttons used to close dialogs in the eLauncher as "Times" instead of "Close Dialog".	MAPS-1419
Config	On the Server -> IP Restrictions screen, columns containing dates did not sort correctly when clicking on the column headers.	MAPS-1960
Config	On the Auditing -> Summary screen, the Value column did not sort correctly when clicking on the column header.	MAPS-1962
Config	On the Schedules screen, sorting by Start/End Time was dividing the schedules with blank Start/End times into two groups based on whether or not the schedule had been edited at some point.	MAPS-1965
Config	On the Scheduling -> Configuration screen, the button used to reset the default timeout to 10 minutes was temporarily changing the value to 0, which would then change to 10 upon saving.	MAPS-1966
Config	Attempting to import a MAPS license from file was resulting in an error if the Evisions product update site was not reachable from the MAPS server.	MAPS-1967
Config	Removed the nonfunctional "Upload to CO-OP" button from the Data Dictionary screen.	MAPS-1975
Installation	After importing the MAPS license file for the first time, the License Key field was not filled out for the applications and the message "Invalid License" was shown until the license was re-imported or read from web.	MAPS-1917
Performance	The MAPS database was not decreasing in size when data was removed.	MAPS-1974
Scheduling	When editing a schedule in MAPS Config, the maximum timeout was displaying as 0 regardless of the actual timeout length if the Use Default box was checked.	MAPS-1981

Getting Help

For information on using the software, please refer to the in-product Help, which contains detailed information on all aspects of the product.

If you are having problems with the installation or configuration, you can search our knowledge base of common issues and their resolutions at <http://helpdesk.evisions.com>. If you are unable to find the solution, submit a HelpDesk request with a detailed explanation of the problem you are experiencing.

Please do not hesitate to contact the Evisions HelpDesk if any questions or problems arise. We are here to help you and want to ensure your success.

If you find that areas of this documentation could benefit from additional detail or clarification, please let us know. We are constantly trying to improve the installation process to make it as easy as possible.